

SCANGRIP®



DETAILING AND COLOUR MATCH



NEW
GROUNDBREAKING
BATTERY CONCEPT

LIGHTING SOLUTIONS FOR
THE PAINTING INDUSTRY

SCANGRIP®

2024



LIGHTING SOLUTIONS FOR THE PAINTING INDUSTRY

SCANGRIP is constantly pushing back the boundaries of LED lighting and battery technology, creating new and specialized work light solutions.

This product line is the most comprehensive and sophisticated of its kind in the world. The specialized lighting solutions with superior quality are made for colour matching, detailing and general paint work and are usable everywhere a painted surface needs inspection.





3
years
warranty

PATENT PROTECTED

Designed by us. Manufactured by us.

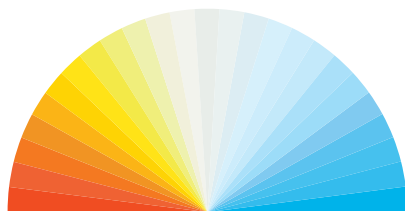
LIGHTING SOLUTIONS FOR THE PAINTING INDUSTRY

The specialized SCANGRIP lights for the painting industry stand out as the widest and most sophisticated range on the market, incorporating cutting-edge lighting and the newest battery technology. The product range has embedded all possible needs for effective and specially designed work lights including suspension and stand solutions for both stationary and flexible positioning of the lights to match the specific work task.

Benefit from the entire colour temperature spectrum

Finding the accurate colour match without the right light is one of the challenges that a car painter is facing on a daily basis. Even though two colours appear to match under one lighting condition, they can look different when the light changes. The phenomenon is called metamerism and can also be described as a colour difference that only appears under varying light.

The CCT SCAN functionality offers the option to automatically sweep through the various colour temperatures available in the interval from 2500 K to 6500 K.



CCT SCAN - Stepless

As the CCT SCAN function is representing the entire colour temperature spectrum in one easy step, it makes it faster and more convenient to match the colour of the car. When it comes to detailing and car care, the detailer can inspect the surface of

the car using all the colour temperatures available, and in this way, detect any scratches or imperfections. Overall, the CCT SCAN functionality provides optimum conditions for the most accurate colour match and highlighting and discovering paint defects.

Importance of right work light

The SCANGRIP lighting solutions increase the quality and finish of each, individual operation and reduces the rate of time-consuming and costly re-work. Due to the special LED features, this lighting range is perfect for any paint, polish, cleaning, or prep-zone operation. This means that for instance holograms and polishing errors will be detected during the working operations, and, in this way, several days of costly re-do will be avoided.

State-of-the-art functionality

The sturdy work lights are designed to resist the most extreme demands of the painting workshop environment. The long operating time of the work lights makes it possible to complete a job without interruption of time-consuming recharging. Advanced features such as wireless BLUETOOTH lighting control, integrated USB power bank, and CCT SCAN functionality further highlight their superior capabilities, elevating them to a league of their own.

APPLICATION AREAS

- For everybody inspecting painted surfaces
- For all kinds of car, truck, and bus workshops
- For car and industrial painters
- For prep-zone operations and detailing centers
- For paint protection film (PPF) operations

// The COB (chips on board) LED technology provides a unique, uniform and completely even illumination with only one shadow which makes it particularly effective for detailing light

// The colour temperature (KELVIN) exactly fits the specific requirements for efficient work light in the painting industry



GROUNDBREAKING BATTERY CONCEPT

Compatible with all 18 V/20 V battery packs

The SCANGRIP CONNECT battery system offers exceptional freedom for professionals in the painting industry. By using a unique SCANGRIP CONNECTOR, the MULTIMATCH CONNECT work lights are compatible with

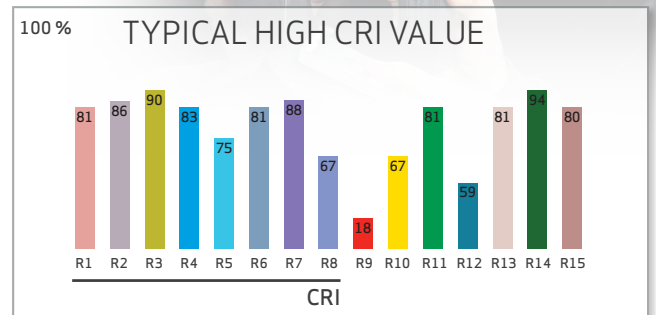
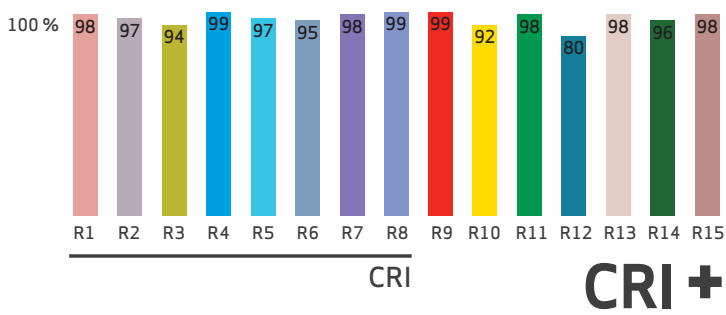
18 V/20 V battery packs from all power tool brands. This innovative concept helps maximize productivity, minimize downtime, and allows users to dedicate their focus to delivering high-quality results.



CRI+ FOR ACCURATE COLOUR MATCHING

Work lights to be used for colour match purposes must have a light source with a high CRI value. The standard CRI value is calculated as an average of the first 8 R-values out of 15. This means that e.g. the R9 (red) value, which is important for correct colour recognition, is not taken into consideration for the CRI value.

SCANGRIP now introduces the CRI+ term defined as an average of all 15 R-values. This is the only correct definition of the CRI value to be used for accurate and reliable colour recognition.



PENLIGHTS

Easy to carry penlights with excellent colour rendering properties for colour match always readily available in a shirt or pant pocket. Designed for inspection in the workshop and especially useful for detection of scratches, pinholes and swirl marks.

Made of sturdy and durable aluminium supplied with solvent resistant glass lens.

MATCHPEN

MATCHPEN has a slim design with focus function for concentrated and focused light beam ranging from 10° to 70°. Comes complete with 2 AAA batteries.

MATCHPEN R

The rechargeable MATCHPEN R features a 2 COLOUR LIGHT function, providing you with the option to choose between 2 different colour temperatures depending on the job at hand. Focus function for concentrated and focused light beam ranging from 10° to 45°. It can easily be recharged with the enclosed USB cable.

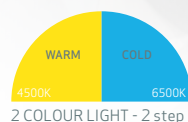


MATCHPEN

€ 42.90

03.5117

Penlight with focus function providing 100 lumen



MATCHPEN R

€ 54.90

03.5122

Rechargeable penlight with focus function and 2 COLOUR LIGHT providing 100 lumen

EU DESIGN
PATENT
2704684



Two black Scangrip Colour Match pens are shown diagonally on a surface covered in various paint splatters. The pens have a red band near the top and a small white logo on the bottom. The text 'SCANGRIP' and 'COLOUR MATCH' is printed on the side of each pen.

SCANGRIP®
COLOUR MATCH

SCANGRIP®
COLOUR MATCH

3
years
warranty

PATENT PROTECTED



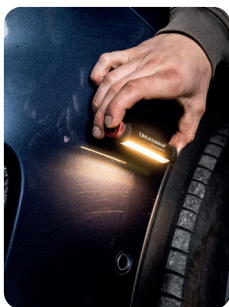
UNIMATCH

The UNIMATCH headlamp is the must-have companion for professionals seeking a universal lighting solution. With its ingenious design, UNIMATCH seamlessly transitions between a headlamp and a practical penlight, offering versatility and convenience in one efficient tool.

It features excellent colour rendering properties **CRI+** for colour match and provides up to 150 lumen in two steps, 50 % and 100 %. Apart from the main light, it is also designed with a spotlight providing 75 lumen.

A unique characteristic of UNIMATCH is a stepless CCT functionality, enabling you to manually find exactly the colour temperature suited for the task. Adjust the colour temperature in the range of 2500 K to 6500 K by turning the red dial on the side of the lamp. With soft rounded edges and delicate design, the headlamp is both modern and functional, enhanced by its super-lightweight body of only 50 g that provides maximum convenience during use.

Moreover, UNIMATCH has a built-in magnet and a clip for the pocket to carry the work light with ease. The remarkable flexibility of UNIMATCH makes it an invaluable tool for detailing tasks. Transform it into a hands-free headlamp by easily mounting it on the headband. Rotate the lamp 360° to find the ideal lighting angle. Attach it to your cap using the included mounting device for added convenience. Additionally, UNIMATCH can be used as a penlight to detect scratches, pin holes, and swirl marks.



EU DESIGN
PATENT
2635946



UNIMATCH

€ 74.90

03.5659

Headlamp and penlight in one
with stepless CCT functionality,
providing up to 150 lumen

Including clip for mounting on cap



Built-in clip



Built-in magnet





3
years
warranty

PATENT PROTECTED

HEADLAMP

Superior hands-free illumination for any detailing or colour match job.

The I-MATCH 3 headlamp provides an extremely powerful illumination and lightens up your entire field of view.

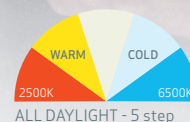


The headlamp features ALL DAYLIGHT function offering different colour temperatures depending on the type of job to be carried out. In addition, the stepless dimmer function enables you to easily adjust the light output in the range from 10 to 100 %.

In sensor mode, the light can easily be switched on/off by waving your hand in front of the lamp, even when wearing gloves.

The robust and sleek headlamp has a modern and streamlined design and is dust and waterproof (IP65) with a remarkably low weight, only 100 g.

As optional accessory, the SCANGRIP POWERBANK 03.5782 can be used for increased operating time. Simply attach the powerbank to the headband via the enclosed flexible clip holder and connect the cable to the headlamp.



I-MATCH 3

€ 84.90

03.5656

Rechargeable COB headlamp with ALL DAYLIGHT providing 250 lumen

EU DESIGN
PATENT
2635946

ILLUMINATED AREA



Standard
headlamp



I-MATCH 3
headlamp



With sensor function





POWERBANK

Extend the operating time
Optional accessory for I-MATCH 3

SCANGRIP POWERBANK

€ 29.90

03.5782



3
years
warranty

PATENT PROTECTED

HAND LAMPS

Handheld rechargeable work lights with excellent colour rendering properties, for perfect colour match.

Easy to carry in the pocket or in the work belt with the built-in clip, ready at hand for quality check between prep-zone operations.

Place the lamp anywhere you want during inspection with the turnable sturdy hook or the strong built-in magnet. The flexible lamp head tilts up to 180 degrees. Durable construction, dust as well as waterproof, IP65. Supplied with solvent resistant glass lens. Battery indicator at front shows when the battery must be recharged.

EU DESIGN
PATENT
2373282

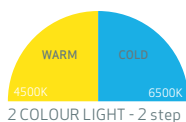
MINIMATCH

With its strong and basic functionality, the handheld MINIMATCH features 2 COLOUR LIGHT (warm and cold), especially useful for bright and dark coloured surfaces. Supplied with a two-step operating option: Step 1 = 50 %, step 2 = 100 % light output.

SUNMATCH 4

The SUNMATCH 4 features the new outstanding CCT SCAN function which means the light can scan the surface of an object with the entire colour temperature spectrum from 2500 K to 6500 K automatically. At any point, the CCT SCAN function can be locked, and, in this way, you will be able to customize the light to the specific task. A spotlight for inspection is also included at the top.

To avoid overheating the built-in intelligent heat protection system switches to low mode (50 %) after 3 minutes continuous use at high mode. SUNMATCH 4 is always ready to use and easy to find when placed in its charging base after each job.



MINIMATCH

€ 94.90

03.5650

Handheld rechargeable work light with 2 COLOUR LIGHT providing 200 lumen

Optional accessory :
SCANGRIP DIFFUSER SMALL



SUNMATCH 4

€ 139.90

03.5657

Handheld rechargeable work light with CCT SCAN function providing 500 lumen

Including 1 x SCANGRIP
DIFFUSER SMALL

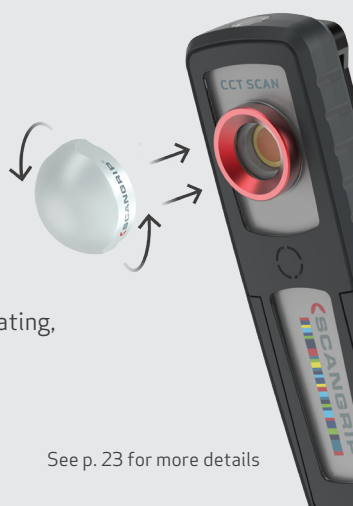




SCANGRIP DIFFUSER

The light diffuser is designed to spread and soften the light of your SUNMATCH 4 or MINIMATCH work light, providing new possibilities to adapt the light even further to the specific work task as it minimizes reflections and harsh light.

The cover is lightweight and mounted directly on top of the lens. It is especially applicable for checking high spots while coating, as well as car dent repair and detecting dust nibs on painting.



See p. 23 for more details

3
years
warranty

PATENT PROTECTED

MULTIMATCH WORK LIGHT

Handy and powerful work light for inspection and detailing providing up to 1200 lumen.

The MULTIMATCH R handlamp features the unique, stepless CCT SCAN function, providing you with the option to customize the light to the specific task. By activating the CCT SCAN function, the work light will automatically scan the surface of the object with the entire colour temperature spectrum from 2500 K to 6500 K. At any point, you can lock the CCT SCAN function and use the specific colour temperature for colour matching or inspection.

The lamp is easy to carry and is ergonomically designed for a good grip on the handle, which is also equipped with powerful integrated magnets for flexible mounting. This gives you high flexibility and application possibilities for internal inspection of cars and other narrow areas.

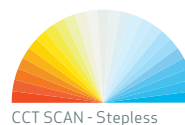
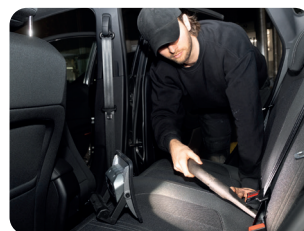
The lamp is designed for direct mounting on the SCANGRIP TRIPOD and WHEEL STAND. By using the WHEEL STAND, MULTIMATCH R can be mounted on the lower bracket as a second light to illuminate from below.



The handlamp has a built-in power bank with USB outlet to charge mobile devices.



EU DESIGN
PATENT
4070035



CCT SCAN - Stepless

MULTIMATCH R

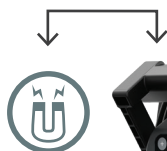
€134.90

03.5658

Rechargeable work light
with CCT SCAN providing
1200 lumen



Optional accessory :
SCANGRIP DIFFUSER MEDIUM



See p. 23 for more details

CCT SCAN

SCANGRIP®

3
years
warranty

PATENT PROTECTED



MULTIMATCH CONNECT WORK LIGHTS

compatible with all 18 V/20 V battery packs

Outstanding and powerful rechargeable work lights for inspection of large surfaces during polishing, painting, and cleaning operations as well as for colour match.



Featuring the new SCANGRIP CONNECT battery system, these work lights are specifically designed to be utilized with 18 V/20 V battery packs from all leading power tool brands through the SCANGRIP CONNECTOR. Simply connect by adding the smart CONNECTOR matching your 18 V/20 V battery pack

to the MULTIMATCH CONNECT work light and you are ready to work. In addition, the POWER SUPPLY CONNECT can be used for direct power providing unlimited availability to light.



CCT STEPLESS

With the unique CCT SCAN functionality, you can find the ideal colour temperature for your task. This function allows the light to sweep through the entire colour temperature spectrum (2500 K to 6500 K) automatically and can be locked when the optimal temperature is found. This guarantees accurate colour matching and paint defect detection. The 5-step dimmer also lets you adjust the light to five different levels.

The MULTIMATCH CONNECT work lights are also supplied with a built-in power bank with USB outlet to charge mobile devices.

The body is made of die-cast aluminum which makes it extremely sturdy and shockproof to endure even heavy strokes and shocks.



EU DESIGN
PATENT
213346





BLUETOOTH - Light control app

- Dimmer light output into 5 levels 10 - 100 %
- Adjust CCT value in 5 steps 2500 K - 6500 K
- Switch on/off
- Group control function, up to 4 lamps
- Assign pin code
- Check battery level

With the BLUETOOTH light control feature, you can control up to four MULTIMATCH CONNECT lamps. The light control makes it possible to turn on/ off the lamp from your phone and adjust the light output as well as the colour temperature in steps from 2500 K to 6500 K. Assign your own personal pin code to prevent other users from controlling the lamp.

The wireless application is perfect when working with one or more hard-to-reach lamps, for example positioned on the SCANGRIP TRIPOD or SCANGRIP WHEEL STAND.





MULTIMATCH CONNECT - maximal freedom

SCANGRIP proudly presents a new groundbreaking battery concept called SCANGRIP CONNECT. Imagine the convenience of having the most superior work lights at your disposal, all powered by your trusted battery brand.

With our innovative approach of merging power tool batteries and professional work lights, you have the complete freedom to utilize the MULTIMATCH CONNECT work lights, regardless of which battery brand you prefer.

- Work lights compatible with 18 V/20 V battery packs from all leading power tool brands
- Smart connector with BATTERY SAFETY SYSTEM
- Extremely powerful illumination and high durability



The MULTIMATCH CONNECT work lights are compatible with the METABO/CAS battery system* and all other 18 V/20 V battery packs from leading power tools brands. As something unique, we also offer a POWER SUPPLY which can be used for direct power providing unlimited availability to light.



*Compatible with METABO / CAS battery system
For METABO / CAS no connector is required



SMART CONNECTOR

A new invented smart CONNECTOR is designed for each power tool brand. Simply mount the CONNECTOR to the work light, attach your battery and you are ready to work.

A BATTERY SAFETY SYSTEM protects the battery pack and makes it safe to use. The safety system features an automatic discharge protection, overload protection and temperature surveillance which means you can use your 18 V/20 V battery pack again and again without damaging it.

The SCANGRIP CONNECTORS are protected by design patent and approved by TÜV Rheinland. Each CONNECTOR is sold under separate item numbers and individually designed to fit each power tool brand.

Compatible with:

AEG
AMPSHARE
BERNER
BOSCH
BOSCH GREEN
DEWALT
EINHELL
FEIN
FESTOOL
FLEX
HAZET
HIKOKI
HILTI
INGERSOLL
MAKITA
METABO
MILWAUKEE
PANASONIC
RIDGID
SNAP-ON
WÜRTH



EU DESIGN
PATENT
213346

MULTIMATCH 3 CONNECT

€ 219.90

03.5675C



CCT SCAN - Stepless



Work light compatible with all 18 V/20 V battery packs, CCT SCAN, and BLUETOOTH providing up to 3000 lumen.

MULTIMATCH 8 CONNECT

€ 329.90

03.5676C



CCT SCAN - Stepless



Work light compatible with all 18 V/20 V battery packs, CCT SCAN, and BLUETOOTH providing up to 8000 lumen.

3
years
warranty

PATENT PROTECTED

SCANGRIP WHEEL STAND

The SCANGRIP WHEEL STAND is developed for mobile positioning of the work light in the detailing workshop. It makes it easy to move the light to where you need it, and at the same time you avoid uncomfortable and heavy lifting from one work-place to the other.

The SCANGRIP WHEEL STAND is extendable from 0.9 m to 1.9 m and is equipped with 5 wheels providing. The new base is equipped with 5 wheels for improved safety and stability and easy maneuverability. The wheels are sturdy and of high quality and roll easily even on uneven surfaces. 2 of the wheels are lockable to secure a safe and fixed position.

It is fast and easy to position the work light on the SCANGRIP WHEEL STAND, and when mounted the light can be tilted to provide the optimum beam angle. When the job is done, it can easily be put aside.



As an additional, the WHEEL STAND comes with a flexible bracket that enables you to easily position a second work light to illuminate from below.

The extra mounting bracket is adjustable in the height and provides complete flexibility to position the light in the optimum height.

When working on the side of the car or doing prep work at the panel this dual light option provides perfect, shadow free illumination from the upper side as well as from the underside.



Welded steel mounting cap 10mm thread



360° locking system for a firm grip

SCANGRIP WHEEL STAND

€ 159.90

03.5682

Max load 10 kg
Weight 6.6 kg

DUAL BRACKET

€ 26.90

03.5308



Dual bracket for positioning of two lamps



3
years
warranty

PATENT PROTECTED

SCANGRIP TRIPOD

In the detailing workshop the SCANGRIP TRIPOD is indispensable for stationary positioning of the MULTIMATCH work lights for illumination in a specific working area.

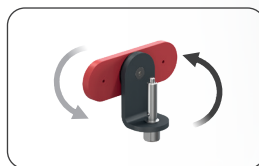
The SCANGRIP TRIPOD is extendable from only 1.35 m up to 3 m which gives you complete flexibility to position the light in the requested height. When mounted on the tripod the light can be tilted to provide the optimum beam angle.

The stable construction of the SCANGRIP TRIPOD makes it safe even when fully extended. To increase safety when in use the cable of the lamp can be fixed in the safety clips placed on each separate leg.

MAGNET BRACKET

€ 31.90

03.5390

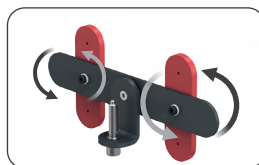


For flexible positioning of the MULTIMATCH 3 CONNECT on any magnetic surface

MAGNET BRACKET - Large

€ 54.90

03.5391



For flexible positioning of the MULTIMATCH 8 CONNECT on any magnetic surface



SCANGRIP TRIPOD

€ 119.90

03.5431

Max load 10 kg
Weight 6 kg

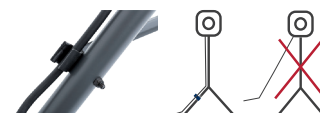
DUAL BRACKET

€ 26.90

03.5308



Dual bracket for positioning of two lamps





SCANGRIP DIFFUSERS

The light diffuser is designed to spread and soften the light while avoiding hard shadows. It gives you increased functionality and new possibilities to adapt your work light even further to the specific work task. The smooth and diffused light reduces glare and shadows making it easier to identify high spots when working with coatings and see dust nibs on painting. It may also provide a pleasant background light in the detailing studio.

Diffusers for MULTIMATCH work lights

The SCANGRIP DIFFUSER enables you to transform the powerful and bright light from the MULTIMATCH products to a soft and broad spread of light similar to what you would get from a cloudy sky. The high CRI performance of the MULTIMATCH and the ability to adjust colour temperature and brightness of the light is maintained when the diffuser is used. Easy and safe mounting with strong magnets.

SCANGRIP DIFFUSER - Medium

€ 8.90

03.5922
Fits MULTIMATCH R

NEW



SCANGRIP DIFFUSER

€ 10.90

03.5750
Fits MULTIMATCH 3 CONNECT



SCANGRIP DIFFUSER - Large

€ 15.90

03.5751
Fits MULTIMATCH 8 CONNECT



Diffuser for MINIMATCH and SUNMATCH 4

The small diffuser provides a soft and diffused light when mounted on top of the lens. The compact size of the handlamps and the diffuser enables you to carry it in the pocket and makes it easy to adjust the light to the work task. The diffuser comes in a packet of four pieces.

SCANGRIP DIFFUSER - Small - 4 pcs

€ 15.90

03.5778
Fits MINIMATCH and SUNMATCH 4



3
years
warranty

PATENT PROTECTED

DETAILING KIT - ESSENTIAL

This kit includes all the essential products you need for a professional finish. The sturdy nylon DETAILING kit bag, complete with a convenient carrying strap, ensures a firm hold while protecting your products. Its smart design enables easy transportation and quick access to your tools. Take your detailing game to the next level with this practical and reliable kit.

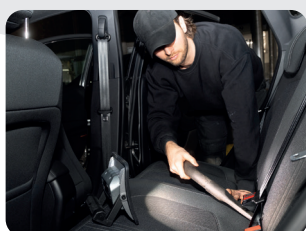


DETAILING KIT - ESSENTIAL

€ 319.90

49.0220

Includes:
I-MATCH 3, 03.5656
MINIMATCH, 03.5650
MULTIMATCH R, 03.5658





3
years
warranty

PATENT PROTECTED

PENLIGHTS



	MATCHPEN	MATCHPEN R
Product number	03.5117	03.5122
Light source	Ultra high CRI LED	Ultra high CRI LED
Luminous flux, lumen	100	100
Adjustable light output	No	No
Beam angle	10°-70°	10°-45°
Beam distance	Up to 75 m	Up to 95 m
CRI	Ra > 95	Ra > 92
CCT	4500 K	4500-6500 K
Adjustable CCT	-	2 steps
Operating time with max. lumen, h	2	2.5
Operating time with min. lumen, h	-	-
Charging time, h	-	2.5
Battery	2 x AAA / 1.5 V Alkaline	3.7 V / 1100 mAh Li-ion
Protection class	IP54	IP30
Impact protection	IK07	IK07
Impact resistance	1 m	1 m
Cable	-	1 m USB
Operating voltage AC	-	-
Charging voltage/current DC	-	5 V / 1 A
Power consumption	3 W	Max 2.5 W
Charger incl.	-	No
Temperature	-10° to +40 °C	-10° to +40 °C
Dimensions	ø16 x 148 mm	ø19 x 159 mm
Net weight	60 g	88 g
Price	€ 42.90	€ 54.90

SCANGRIP flashlights are tested according to the ANSI/NEMA FL1 standard

UNIVERSAL HEAD LAMP



HAND LAMPS



	UNIMATCH	MINIMATCH	SUNMATCH 4
Product number	03.5659	03.5650	03.5657
Light source	Ultra high CRI+ COB LED	Ultra high CRI+ COB LED	Ultra high CRI+ COB LED
Luminous flux, lumen	75-150 Spot: 75	100-200	50-500 Spot: 200
Adjustable light output	2 levels	2 levels	Stepless
Beam angle	115° Spot: 20°	75°	80° Spot: 20°
CRI	Ra > 96 CRI+ Spot: 96 CRI+	Ra > 96 CRI+	Ra > 96 CRI+ Spot: 95
CCT	2500-6500 K Spot: 4500K	4500-6500 K	2500-6500 K Spot: 4000 K
Adjustable CCT	Stepless	2 steps	Stepless
Operating time with max. lumen, h	1.75	2	2
Operating time with min. lumen, h	3.5	4	10
Charging time, h	2.5	4	4
Battery	3.7 V / 800 mAh Li-ion	3.7 V / 1600 mAh Li-ion	3.7 V / 2600 mAh Li-ion
Protection class	IP20	IP65	IP65
Impact protection	-	-	IK07
Impact resistance	1 m	1 m	1m
Cable	1 m USB	1 m USB	1 m USB
Operating voltage AC	-	-	-
Charging voltage/current DC	5 V / 1 A	5 V / 1 A	5 V / 1 A
Power consumption	Max 1.7 W	Max 3.5 W	Max 8 W
Charger incl.	No	No	No
Temperature	-10 to +40 °C	-10° to +40 °C	-10° to +40 °C
Dimensions	95 x 21 x 26.5 mm	156 x 60 x 38 mm	188 x 58 x 26 mm
Net weight	50 g	190 g	267 g
Price	€ 74.90	€ 94.90	€ 139.90

Optional accessory for 03.5656 I-MATCH 3

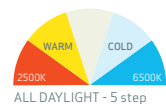
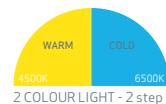


HEADLAMP

I-MATCH 3
03.5656
Ultra high CRI+ COB LED
25-250
Stepless
120°-60°
-
Ra > 96 CRI+
4500-6500 K
5 steps
1.5
15
3.5
3.8 V / 1600 mAh Li-poly
IP65
IK07
1 m
1 m USB
-
5 V / 1 A
Max 2.5 W
No
-10° to +40 °C
100 x 38 x 50 mm
100 g
€ 84.90



POWERBANK
03.5782
-
-
-
-
-
-
3
3.65 V / 4000 mAh
IP20
IK07
1 m
Spiral cable
-
5 V / 2 A
Max 8 W
-
-10° to +40 °C
ø28 x 103 mm
132 g
€ 29.90





CONNECT

CONNECT

Bluetooth

Bluetooth

SCANGRIP®

SCANGRIP®

3
years
warranty

PATENT PROTECTED

MULTIMATCH series



	MULTIMATCH R	MULTIMATCH 3 CONNECT	MULTIMATCH 8 CONNECT
Product number	03.5658	03.5675C	03.5676C
Light source	Ultra high CRI+ COB LED	Ultra high CRI+ COB LED	Ultra high CRI+ COB LED
Luminous flux, lumen	120-1200	300-3000	800-8000
Adjustable light output	Stepless	5 levels	5 levels
Beam angle	100°	110°	110°
CRI	Ra > 96 CRI+	Ra > 96 CRI+	Ra > 96 CRI+
CCT	2500-6500 K	2500-6500K	2500-6500K
Adjustable CCT	Stepless	Stepless	Stepless
Operating time with max. lumen, h	0.8	3@18 V 5.2 Ah battery	1.25@18 V 5.2 Ah battery
Operating time with min. lumen, h	10	30@18 V 5.2 Ah battery	12@18 V 5.2 Ah battery
Operating time: backup battery, h	-	2@10% / 300 lm	1@10% / 800 lm
Charging time, h	3.5	-	-
Battery	3.7 V / 5400 mAh Li-ion	Compatible with METABO / CAS battery system and all other 18 V/20 V battery packs by using the SCANGRIP CONNECTOR	Compatible with METABO / CAS battery system and all other 18 V/20 V battery packs by using the SCANGRIP CONNECTOR
Protection class	IP67	IP30 with CONNECTOR/battery IP65 with power supply	IP30 with CONNECTOR/battery IP65 with power supply
Impact protection	IK07	IK07	IK07
Impact resistance	1 m	1 m	1 m
Cable	1 m USB	-	-
Charging voltage/current DC	5 V / 2 A	-	-
Power consumption	Max 16.5 W	Max 35 W	Max 80 W
Battery incl.	-	-	-
Charger incl.	Yes	-	-
Temperature	-10 to +40 °C	-10 to +40 °C	-10 to +40 °C
Dimensions	155 x 165 x 64 mm	263 x 230 x 110 mm	305 x 292 x 131 mm
Net weight	820 g	2,36 kg	3.72 kg
Price	€ 134.90	€ 219.90	€ 329.90

KIT IN BAG

ESSENTIAL	
Product number	49.0220
Content	I-MATCH 3 MINIMATCH MULTIMATCH R
Dimensions	290 x 100 x 190 mm
Net weight	1.755 kg
Price	€ 319.90





CONNECTORS NEW

SCANGRIP CONNECTORS for 18 V/20 V battery packs		Price
AEG	03.6158C	€ 9.90
BERNER	03.6155C	€ 9.90
BOSCH / AMPSHARE	03.6140C	€ 9.90
BOSCH GREEN	03.6141C	€ 9.90
DEWALT	03.6142C	€ 9.90
EINHELL	03.6143C	€ 9.90
FEIN	03.6144C	€ 9.90
FESTOOL	03.6153C	€ 9.90
FLEX	03.6145C	€ 9.90
HAZET	03.6146C	€ 9.90
HIKOKI / METABO HPT	03.6147C	€ 9.90
HILTI*	03.6157C	€ 24.90
INGERSOLL	03.6152C	€ 9.90
MAKITA	03.6148C	€ 9.90
MILWAUKEE	03.6149C	€ 9.90
PANASONIC	03.6156C	€ 9.90
RIDGID	03.6154C	€ 9.90
SNAP-ON	03.6151C	€ 9.90
WÜRTH	03.6150C	€ 9.90

*21.6V



BATTERY SAFETY SYSTEM

- Automatic discharge protection
- Overload protection
- Temperature surveillance
- Protected by design patent
- Approved by TÜV Rheinland



Scan QR code to see TÜV Rheinland test report

Accessories



CONNECT POWER SUPPLY	
Product number	03.6123C
Battery	-
Cable	5m / 2 x 0.75 mm² H05RN-F
Charger input voltage	100-240V AC 50/60 Hz
Output power	Max 90 W
Protection class	IP65
Impact protection	IK07
Impact resistance	1 m
Temperature	-10 to +40 °C
Dimensions	124 x 83 x 72 mm
Net weight	1 kg
Compatibility	SCANGRIP CONNECT work lights
Price	€ 79.90



CAS BATTERY 18V Li-POWER 5.2Ah	CAS BATTERY 18V Li-POWER 2.0 Ah	CAS CHARGER SC30
03.6121	03.6124	03.6122
18 V 5.2 Ah Li-power	18 V 2.0 Ah Li-power	-
-	-	1.35 m / 2 x 0.75mm² H03V VH2-F
-	-	220-240V AC 50/60 Hz
-	-	Max 30 W
IP20	IP20	IP20
-	-	-
-	-	-
-10 to +40 °C	-10 to +40 °C	0° to +40°C
121 x 81 x 66 mm	111 x 79 x 42 mm	152 x 142 x 76 mm
670 g	430 g	700 g
-	-	12 V-18 V CAS battery
€ 119.90	€ 59.90	€ 54.90



Compatible with METABO / CAS battery system
For ME TABO / CAS no connector is required

SPECIALIZED WORK LIGHT SOLUTIONS

Light is an important tool for many tasks. We take that very seriously when developing specialist lights for niche markets – such as lights for explosive working areas or lights for the painting and detailing industries.



Explosion proof lights for the spray booth



Portable lights for fast curing





Extended warranty

Every SCANGRIP work light is manufactured at our own factories and subject to strict quality controls. Our lights meet the highest quality standards and are built to last. They are so good that we offer a warranty extension. All SCANGRIP work lights come with a 3-year warranty. Because we stand by the products we offer.



3
years
warranty

PATENT PROTECTED

Designed by us. Manufactured by us.



// SCANGRIP is Europe's leading manufacturer of work lights for professionals providing the strongest and most comprehensive ranges of work lights with the latest LED lighting technology available on the market.

SCANGRIP is innovation from Denmark and receives strong recognition in the marketplace for its product design, and the products are known for their high quality.

SCANGRIP strives for perfection, and is continuously optimizing and improving light output, battery capacity, design and ergonomics, durability, user-friendliness, and functionality. The aim is to set new standards for professional work lights.

SCANGRIP was established in 1906 and has a long, impressive history of manufacturing high-quality hand tools and work lights for the industrial, construction, and automotive sectors.

SCANGRIP is part of Hultafors Group - a global company offering a unique portfolio of premium brands within personal protection, tools, and other equipment for discerning craftsmen. Together, we are on a mission to create a better day for professional users.